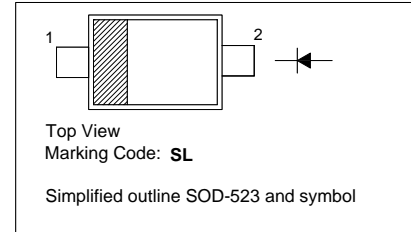


### 0.8A Surface Mount Schottky Barrier Diode

PINNING

PIN	DESCRIPTION
1	Cathode
2	Anode



#### Absolute Maximum Ratings ( $T_a = 25\text{ }^\circ\text{C}$ )

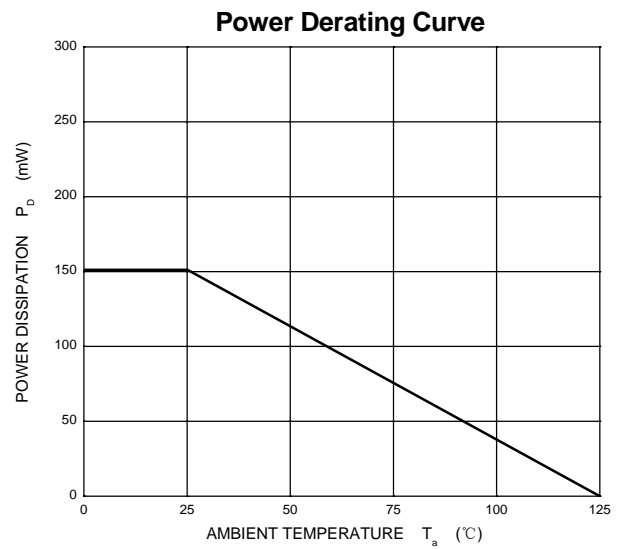
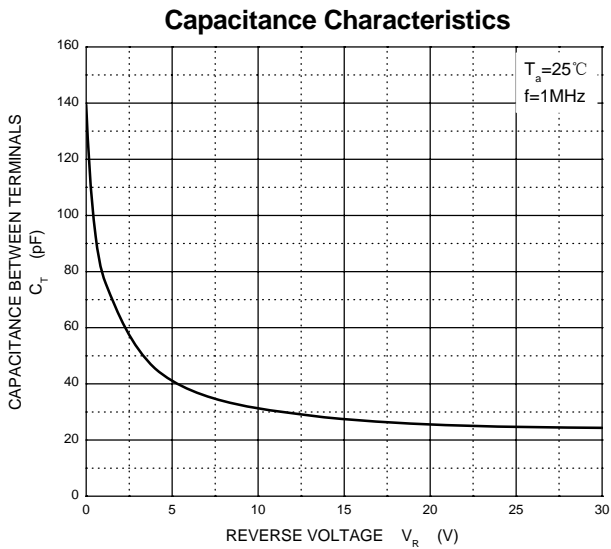
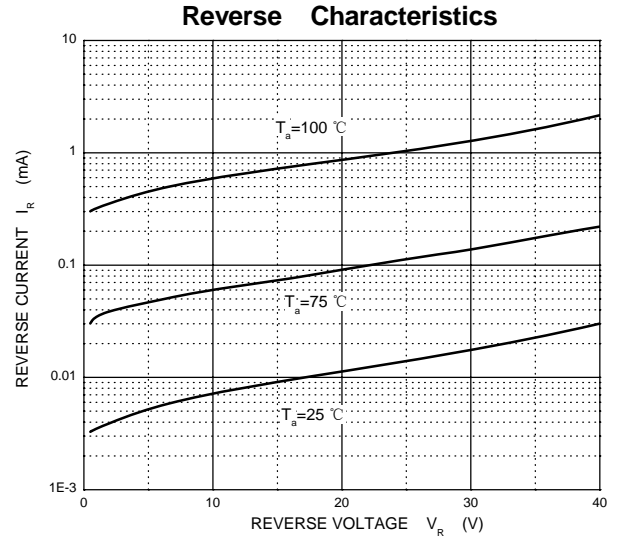
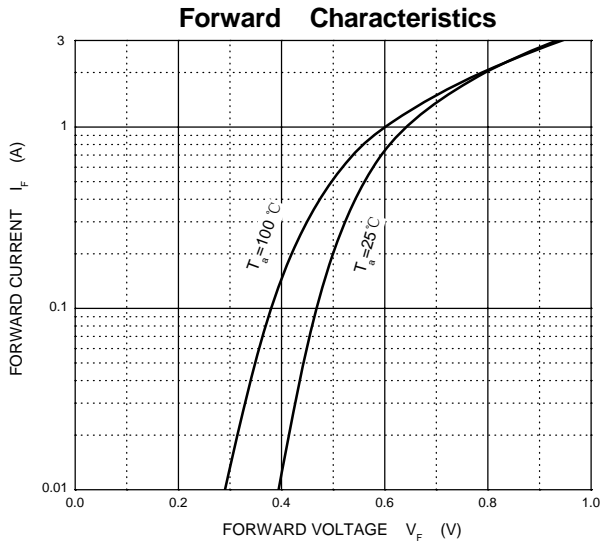
Parameter	Symbol	Value	Unit
Reverse Voltage	$V_R$	40	V
Average Forward Rectified Current	$I_{F(AV)}$	0.8	A
Non-Repetitive Peak Forward Surge Current ( $t = 8.3\text{ ms}$ )	$I_{FSM}$	6	A
Power Dissipation	$P_{tot}$	150	mW
Operating Temperature Range	$T_j$	- 55 to + 125	$^\circ\text{C}$
Storage Temperature Range	$T_{stg}$	- 55 to + 125	$^\circ\text{C}$

#### Characteristics at $T_a = 25\text{ }^\circ\text{C}$

Parameter	Symbol	Min.	Max.	Unit
Reverse Breakdown Voltage at $I_R = 1\text{ mA}$	$V_{(BR)R}$	40	-	V
Forward Voltage at $I_F = 0.1\text{ A}$ at $I_F = 0.8\text{ A}$	$V_F$	- -	0.45 0.62	V V
Reverse Voltage Leakage Current at $V_R = 40\text{ V}$	$I_R$	-	1	mA
Total Capacitance at $V_R = 4\text{ V}$ , $f = 1\text{ MHz}$	$C_{tot}$	-	120	pF



## Typical Characteristics

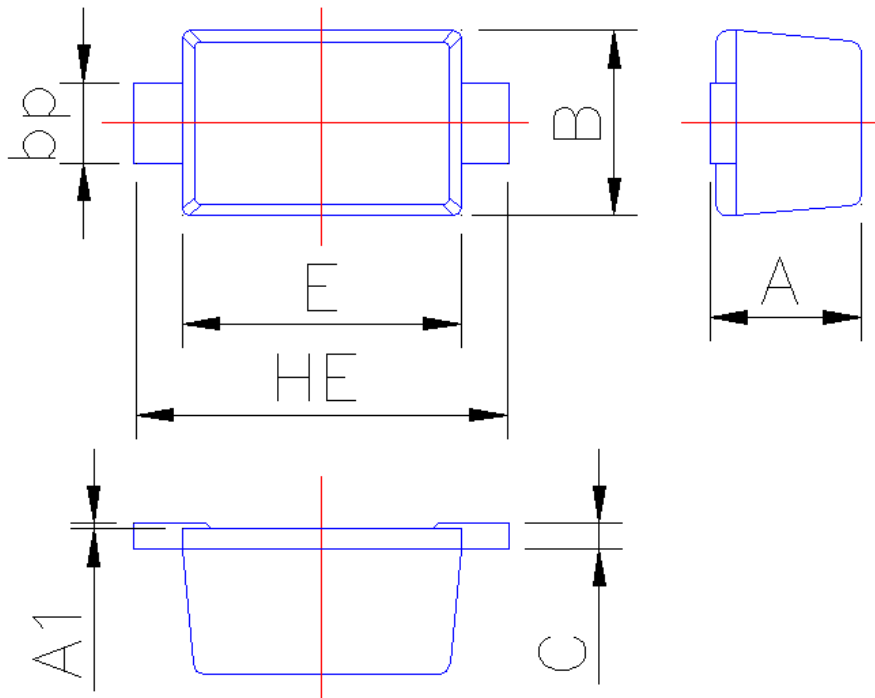




## PACKAGE OUTLINE

Plastic surface mounted package; 2 leads

SOD-523



Symbol	Dimension in Millimeters	
	Min	Max
A	0.60	0.70
A1	0	0.05
B	0.75	0.85
bp	0.25	0.40
C	0.09	0.15
E	1.15	1.25
HE	1.50	1.70